

This report describes vegetation protecting the soil surface from erosion during a chosen month compared to previous years. This report has been generated using MODIS fractional vegetation cover information available in Rangelands and Pasture Productivity (RAPP) map tool <https://map.geo-rapp.org/#australia>. The report is based on 500 metre pixel data on monthly time steps.

Land use forest cover:

Results can be shown for the whole region (polygon), and separated by land use and forest cover classes which are likely to show different cover patterns and targets. Land use is divided into four broad classes: Conservation and natural environments, Agriculture, production native forests and plantation forests (no report), and other (no report). Agriculture is divided into grazing, crops and horticulture which are sub-divided into non-irrigated and irrigated. If forest is present land use is further divided into: non-forest, woodland forest and non-woodland forest. The area of each land use and forest class are shown as a map and chart. The report content is repeated for each land use and forest cover class that covers at least 1% of the area of the chosen region.

Total vegetation Cover:

The total vegetation cover indicates where soil is likely to be protected from wind and or water hillslope erosion. Total vegetation cover for this month is shown on a map and chart classified into 4 classes.

- 71-100% High cover – protected from wind and usually water erosion (high rainfall, steep slopes, and erodible soils may need greater than 80, 90, 95 and up to 100% cover)
- 51-70% Moderate cover – protected from wind erosion
- 31-50% Low cover – not protected
- 0-30% Very Low cover – not protected

Erosion protection: Wind erosion 50% total vegetation cover

The vegetation cover threshold required to prevent soil erosion is usually 50% to reduce wind erosion, 70% or 80% to reduce water (hillslope) erosion depending on the steepness and rainfall. Areas protected from erosion for the month:

- Map: water erosion protection (>70% cover) percentage area and hectares.
- Map: wind erosion protection (>50% cover) percentage area and hectares.

Comparison with previous years:

- Map: anomaly comparing this month to the average cover from the same month in previous years.
- Map: deciles rank of month against the same month in previous years.

Anomalies and deciles until September 2019 are calculated comparing to the same months 2001 to 2019. Extra monthly data will be used to calculate anomalies and deciles post September 2019 as they become available.

Time series monthly from January 2001 to current:

Erosion protection

- Wind erosion protection time series: percentage of the area of the region with greater than 50% cover for each month (orange lines). Horizontal lines are 10th (cover target) and 50th percentiles.
- Water erosion protection time series: percentage of the area of the region with greater than 70% cover for each month (blue line). Horizontal lines are 10th (cover target) and 50th percentiles.

Rainfall

- Millimetres rainfall each month (black line).

Each time series is also stacked by year. The black line shows the current year of data.

Water erosion protection for higher rainfall and steeper slopes:

Water erosion protection on higher slopes. As slope increases, more cover is required to control water erosion. The thresholds reported are:

- the percentage area with pixels greater than 80% total cover.
- the percentage area with pixels greater than 90% total cover.
- the percentage area with pixels greater than 95% total cover.

Acknowledgment of data:

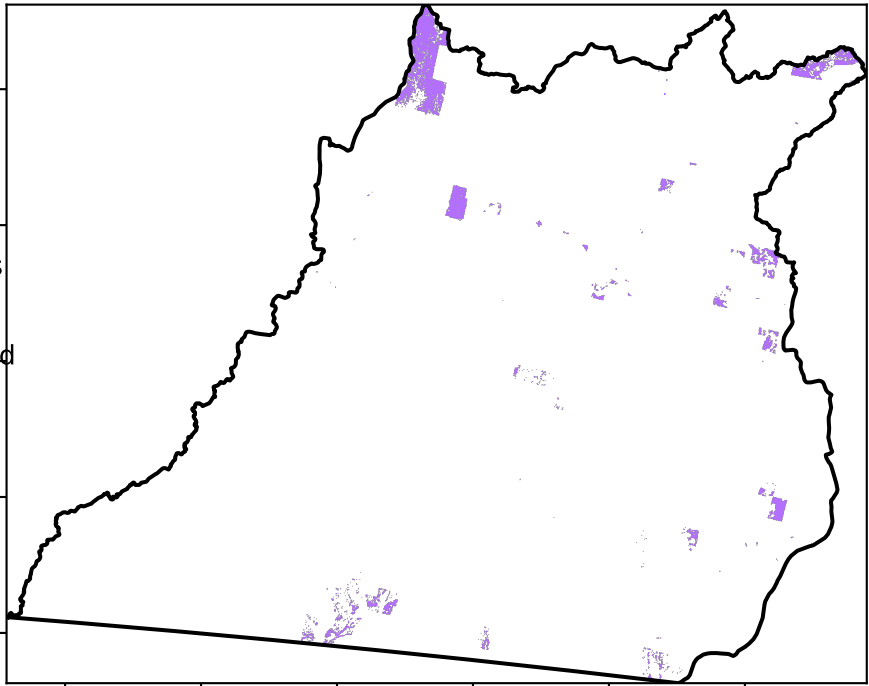
1. <http://www.agriculture.gov.au/abares/aclump/land-use/alum-classification>
2. <http://www.agriculture.gov.au/abares/forestsaustralia/sofr/sofr-2018>
3. <https://www.dpi.nsw.gov.au/agriculture/pastures-and-rangelands/establishment-mgmt/production-management2/groundcover>
4. MODIS Fractional cover algorithm:
<https://doi.org/10.4225/08/5848a3f19a7b3>



Conservation and natural environments Woodland forest

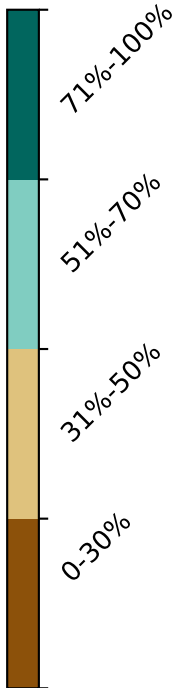
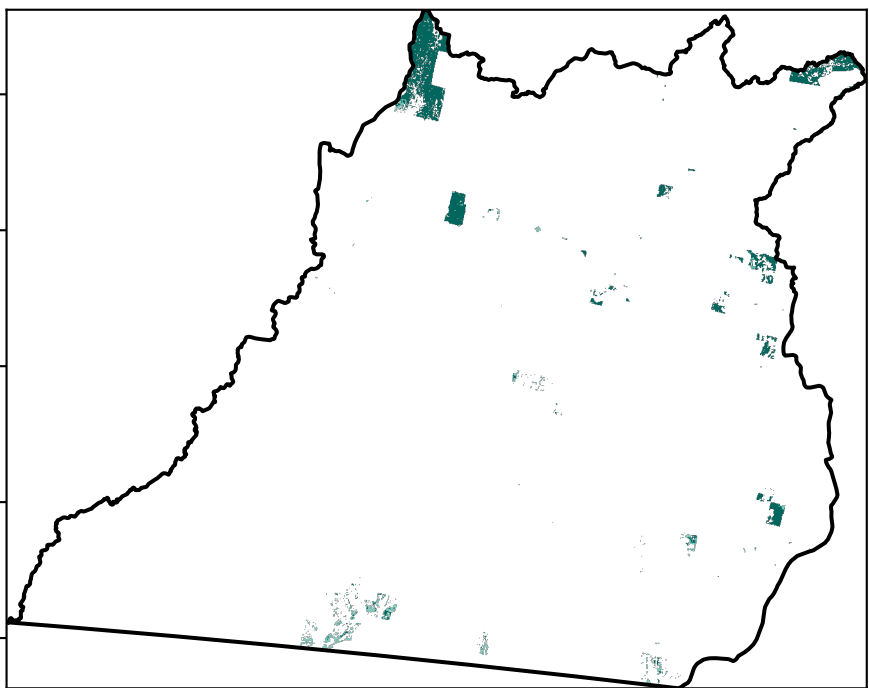
Land use and forest cover

Catchment Scale
Land Use and Forests
of Australia (2018)
Derived from
Catchment Scale Land
Use of Australia
(2018) and Forests
of Australia (2018)

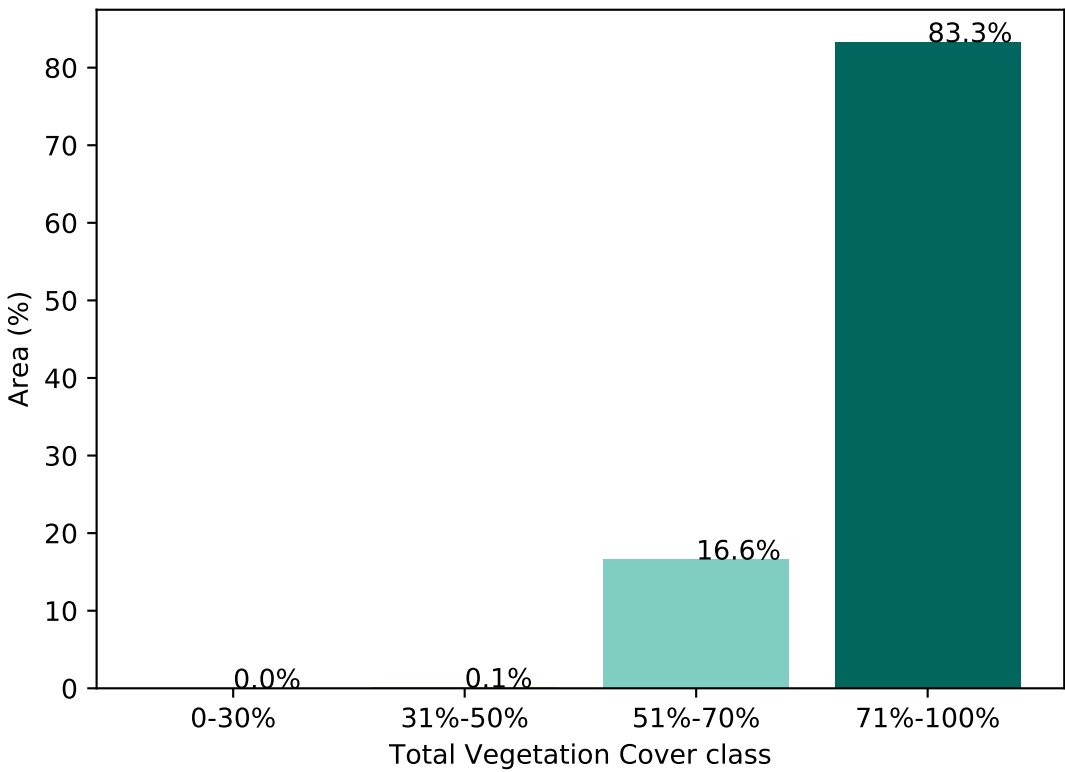


1 Conservation and natural environments - Woodland forest

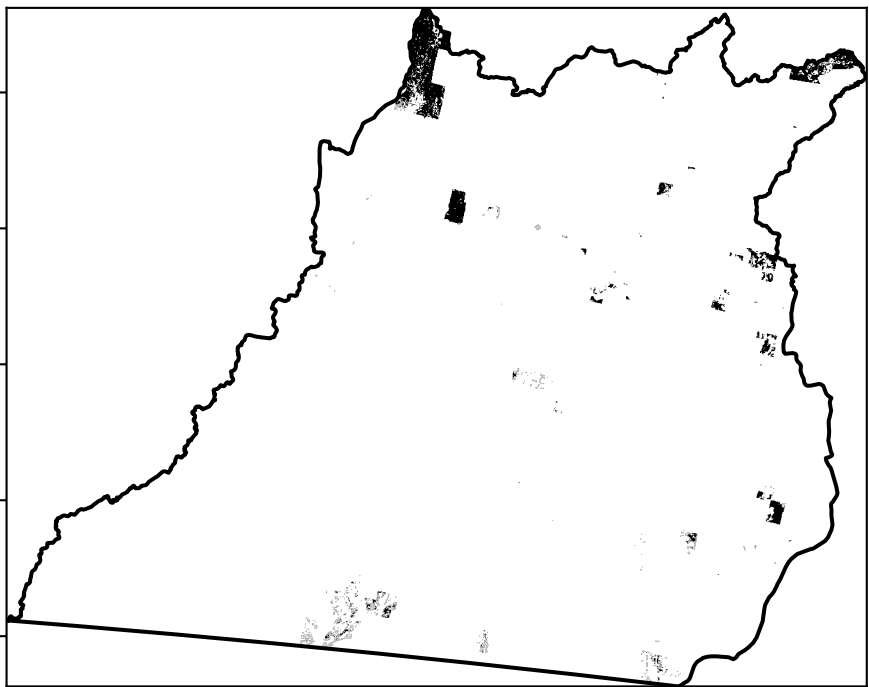
Total Vegetation Cover [%]



Proportion of vegetation cover class in area

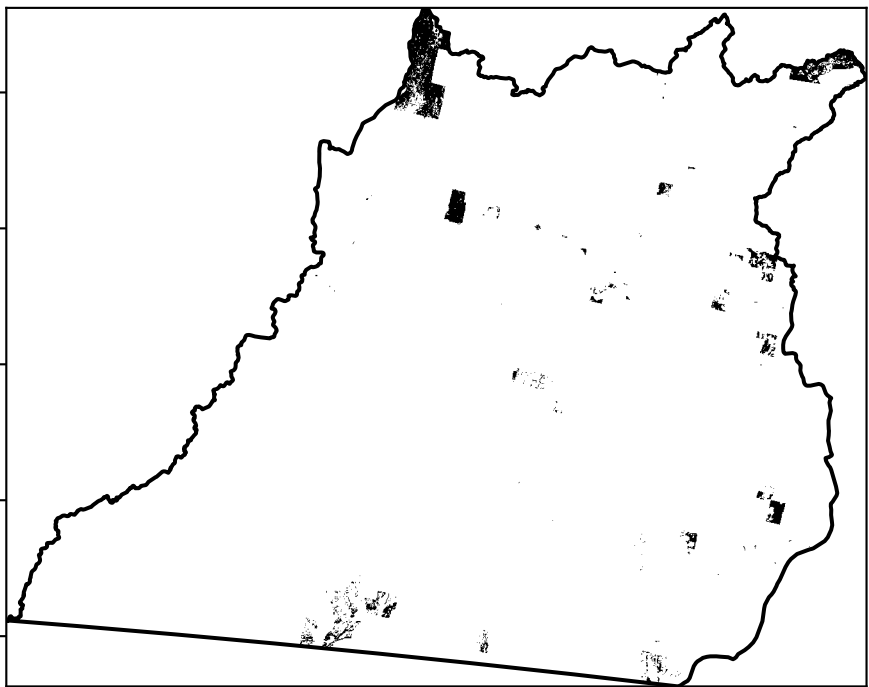


% Area protected from water erosion (>70%)



Area not protected
16.7% of region
(54,909 ha)
Area protected
83.3% of region
(273,890 ha)

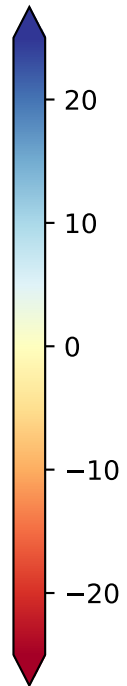
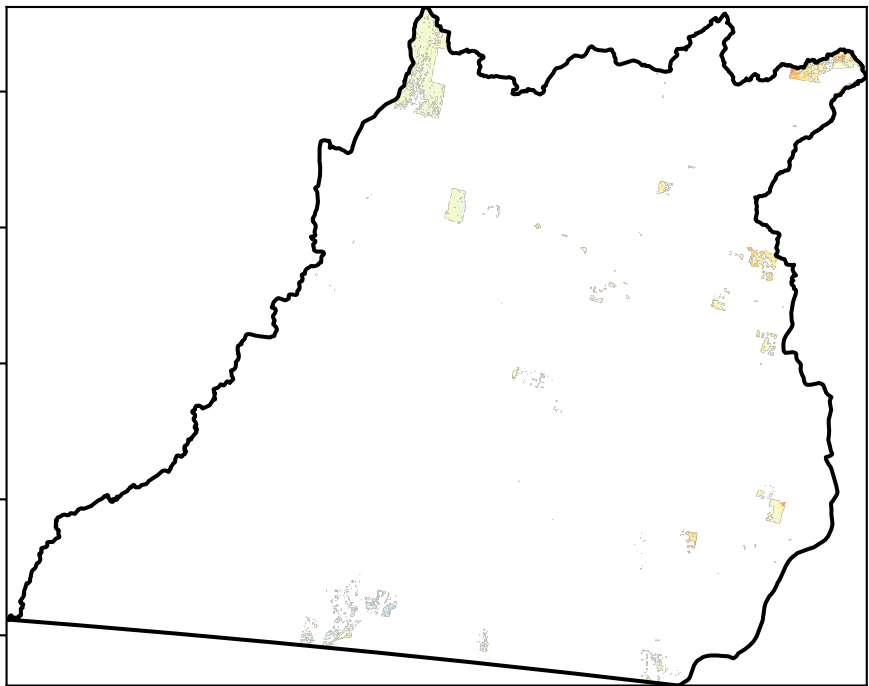
% Area protected from wind erosion (>50%)



Area not protected
0.0% of region (0 ha)
Area protected
100.0% of region
(328,800 ha)

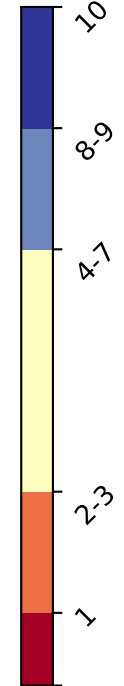
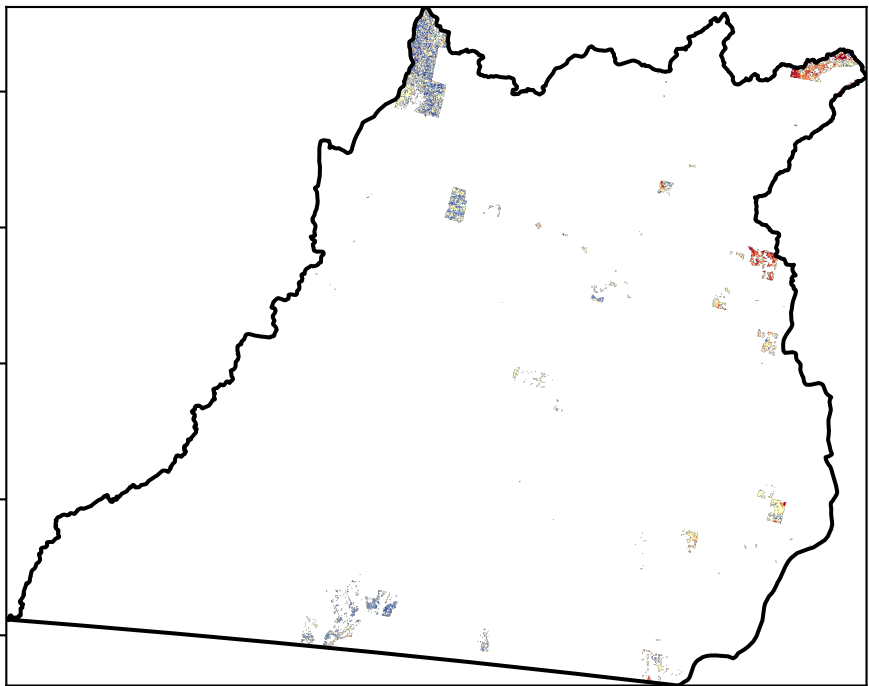
Total Vegetation Cover Anomaly [%]

Anomaly show how
many percentage
points each
pixel is from
the mean. That
is, red pixels
are about 20%
lower than the
mean of that
pixel. The mean
is only for the
month of the map
using baseline
from 2001 to
2019.



Deciles show where the
pixel value lies in the
record, from highest to
lowest, for that month.
That is, red pixels are
in the lowest 10% of
records for that month of
the map using baseline
from 2001 to 2019.

Total Vegetation Cover Decile [%]



TERN



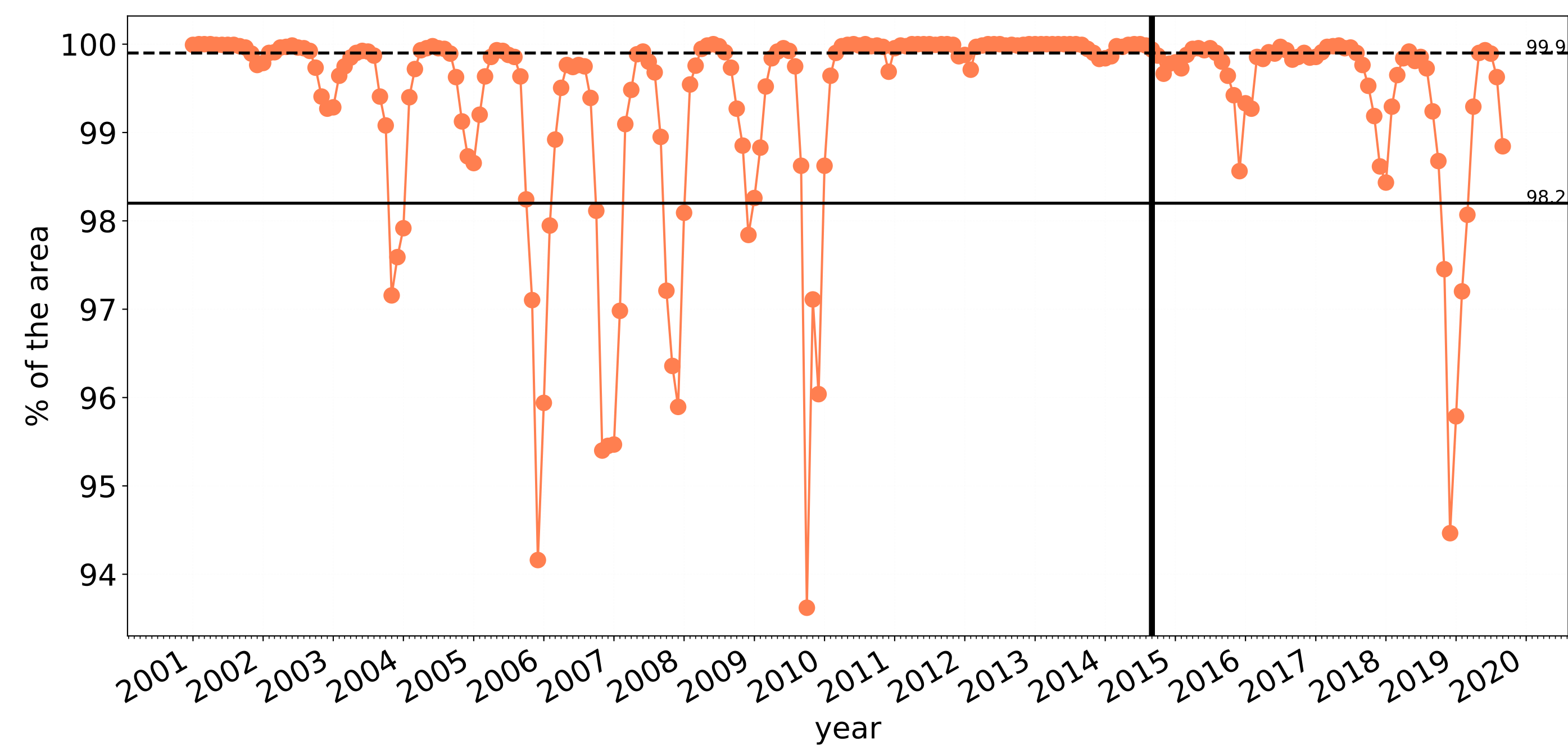
National
Landcare
Programme



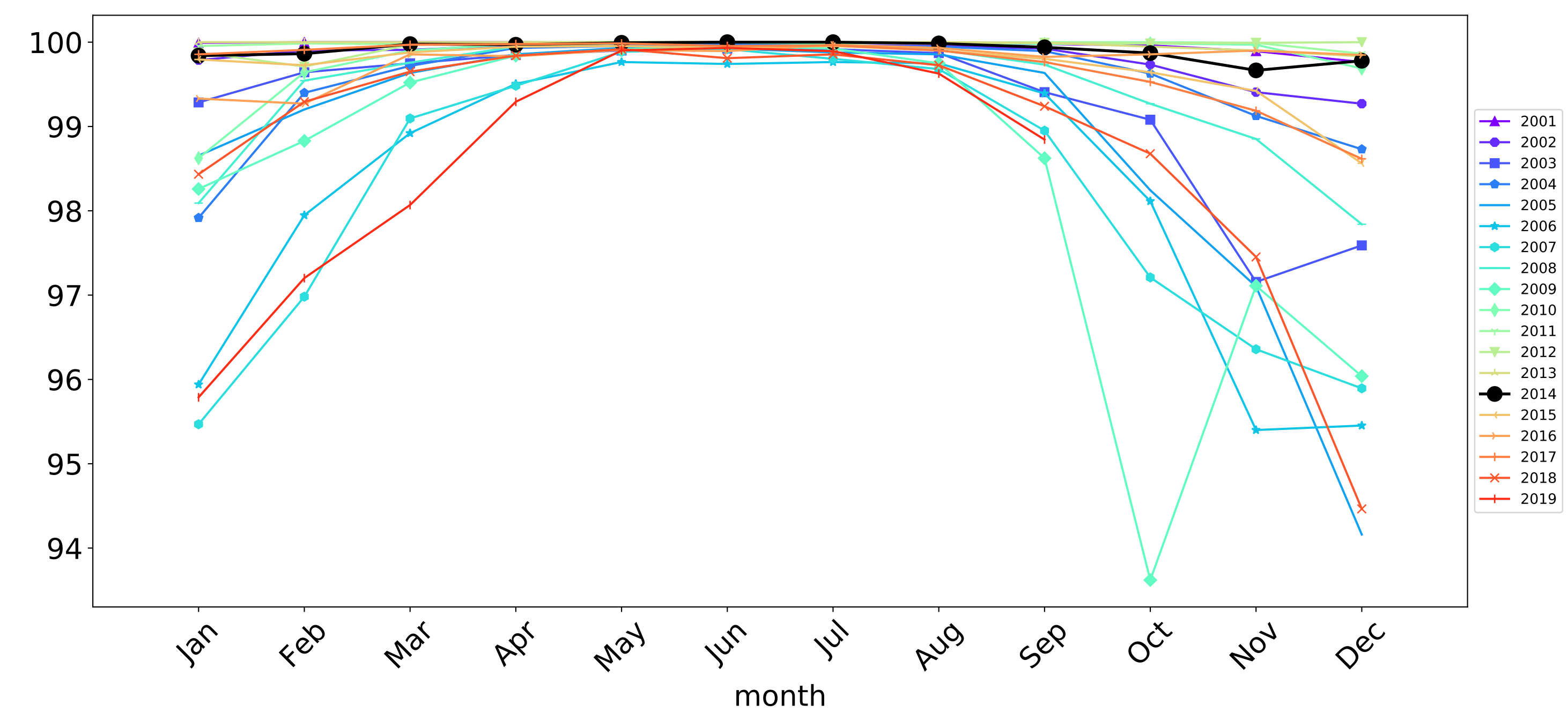
Planning,
Industry &
Environment

Conservation and natural environments Woodland forest timeseries

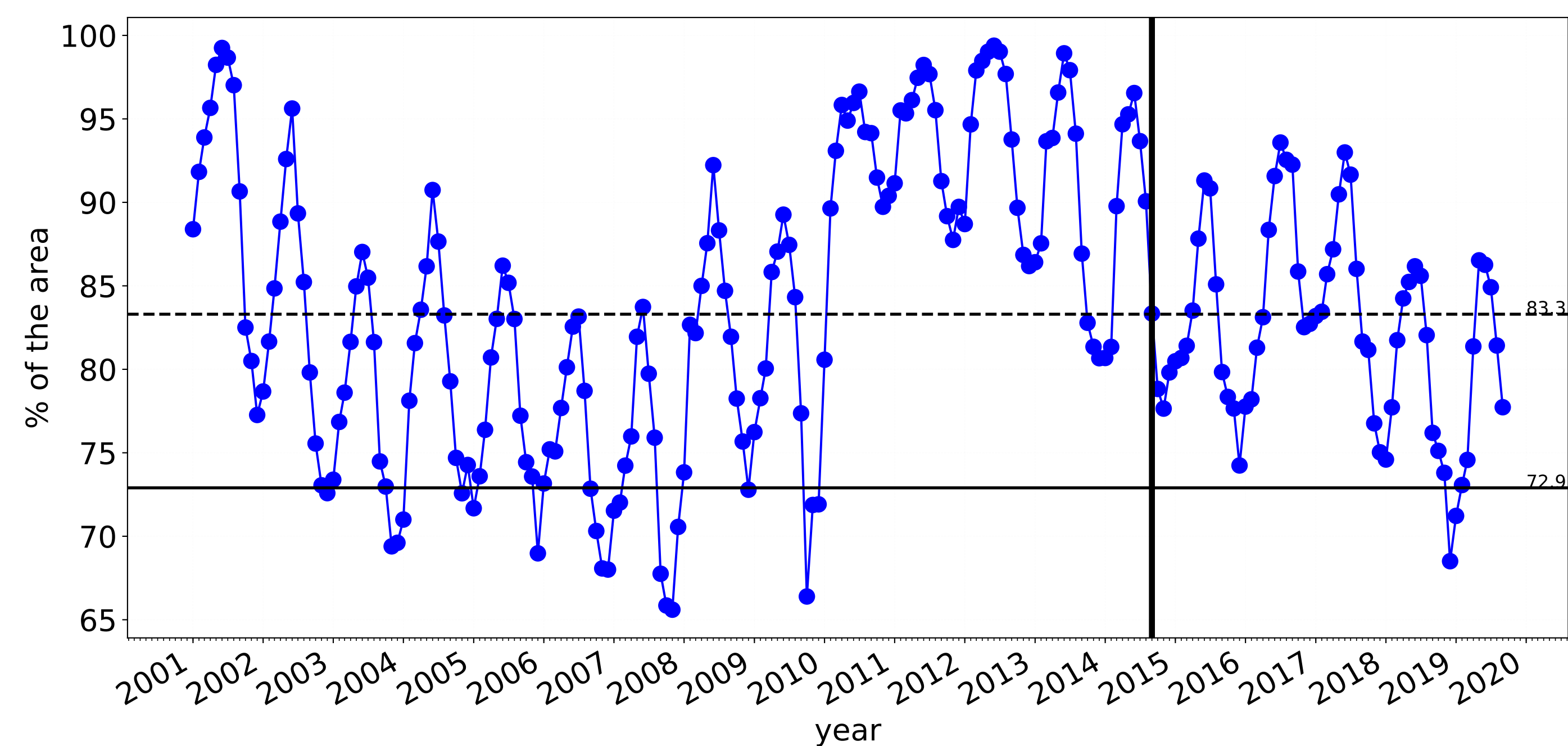
Proportion of the area protected from wind erosion (Total Vegetation Cover > 50%)



Wind erosion historical monthly area protected (Total Veg Cov >50%)



Proportion of the area protected from water erosion (Total Vegetation Cover > 70%)



Water erosion historical monthly area protected (Total Veg Cov>70%)

