

# Total vegetation cover soil protection

## Region:LGA Brighton\_(M) TAS

Date: December 2022

This report describes vegetation protecting the soil surface from erosion during a chosen month compared to previous years. This report has been generated using MODIS fractional vegetation cover information available in Rangelands and Pasture Productivity (RAPP) map tool <https://map.geo-rapp.org/#australia>. The report is based on 500 metre pixel data on monthly time steps.

Land use forest cover:

Results can be shown for the whole region (polygon), and separated by land use and forest cover classes which are likely to show different cover patterns and targets. Land use is divided into four broad classes: Conservation and natural environments, Agriculture, production native forests and plantation forests (no report), and other (no report). Agriculture is divided into grazing, crops and horticulture which are sub-divided into non-irrigated and irrigated. If forest is present land use is further divided into: non-forest, woodland forest and non-woodland forest. The area of each land use and forest class are shown as a map and chart. The report content is repeated for each land use and forest cover class that covers at least 1% of the area of the chosen region.

Total vegetation Cover:

The total vegetation cover indicates where soil is likely to be protected from wind and or water hillslope erosion. Total vegetation cover for this month is shown on a map and chart classified into 4 classes.

- 71-100% High cover - protected from wind and usually water erosion (high rainfall, steep slopes, and erodible soils may need greater than 80, 90, 95 and up to 100% cover)
- 51-70% Moderate cover - protected from wind erosion
- 31-50% Low cover - not protected
- 0-30% Very Low cover - not protected

Erosion protection: Wind erosion 50% total vegetation cover

The vegetation cover threshold required to prevent soil erosion is usually 50% to reduce wind erosion, 70% or 80% to reduce water (hillslope) erosion depending on the steepness and rainfall. Areas protected from erosion for the month:

- Map: water erosion protection (>70% cover) percentage area and hectares.
- Map: wind erosion protection (>50% cover) percentage area and hectares.

Comparison with previous years:

- Map: anomaly comparing this month to the average cover from the same month in previous years.
- Map: deciles rank of month against the same month in previous years.

Anomalies and deciles until September 2019 are calculated comparing to the same months 2001 to 2019. Extra monthly data will be used to calculate anomalies and deciles post September 2019 as they become available.

Time series monthly from January 2001 to current:

Erosion protection

- Wind erosion protection time series: percentage of the area of the region with greater than 50% cover for each month (orange lines). Horizontal lines are 10th (cover target) and 50th percentiles.
- Water erosion protection time series: percentage of the area of the region with greater than 70% cover for each month (blue line). Horizontal lines are 10th (cover target) and 50th percentiles.

Rainfall

- Millimetres rainfall each month (black line).

Each time series is also stacked by year. The black line shows the current year of data.

Water erosion protection for higher rainfall and steeper slopes:

Water erosion protection on higher slopes. As slope increases, more cover is required to control water erosion. The thresholds reported are:

- the percentage area with pixels greater than 80% total cover.
- the percentage area with pixels greater than 90% total cover.
- the percentage area with pixels greater than 95% total cover.

### Acknowledgment of data:

1. <http://www.agriculture.gov.au/abares/aclump/land-use/alum-classification>
2. <http://www.agriculture.gov.au/abares/forestsaustralia/sofr/sofr-2018>
3. <https://www.dpi.nsw.gov.au/agriculture/pastures-and-rangelands/establishment-mgmt/production-management2/groundcover>
4. MODIS Fractional cover algorithm:  
<https://doi.org/10.4225/08/5848a3f19a7b3>



tern

Ecosystem Research Infrastructure



National  
Landcare  
Programme



Grazing

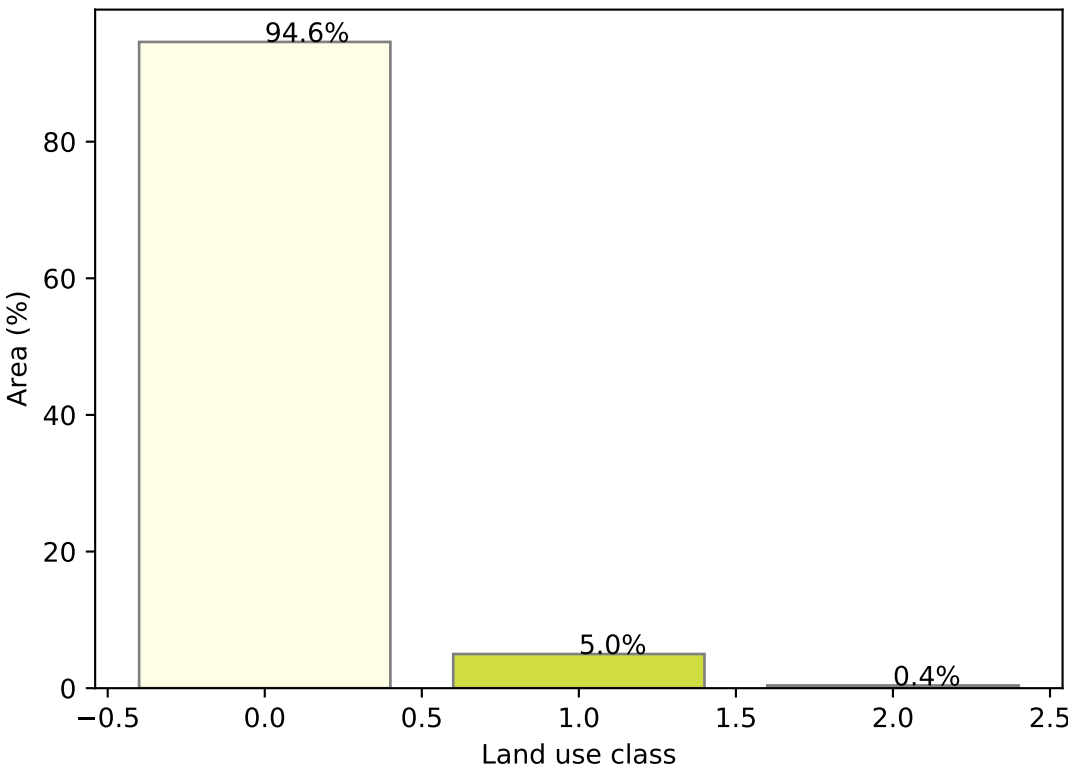
Land use and forest cover

Catchment Scale  
Land Use and Forests  
of Australia (2018)  
Derived from  
Catchment Scale Land  
Use of Australia  
(2018) and Forests  
of Australia (2018)

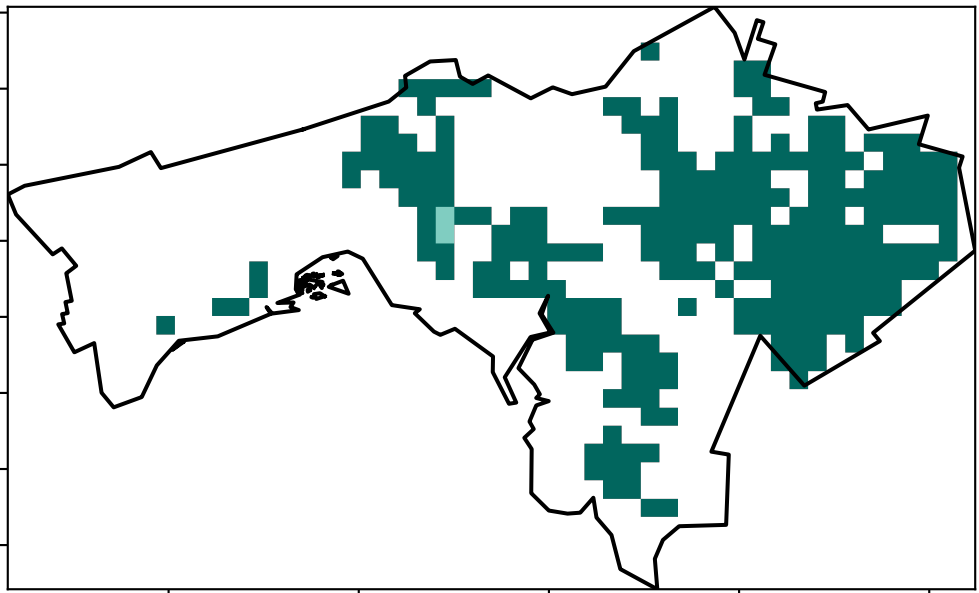


- 1 Agriculture - Grazing - Non forest
- 2 Agriculture - Grazing - Woodland forest
- 3 Agriculture - Grazing - Non-woodland forest

Proportion of each land class in area

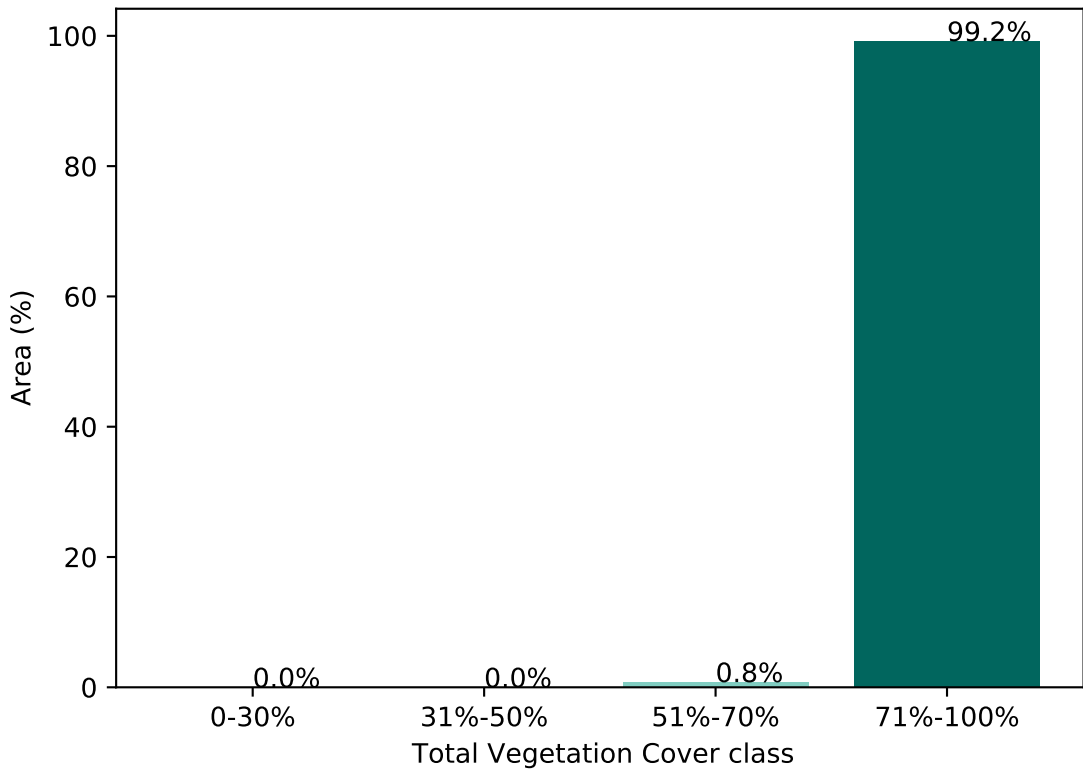


Total Vegetation Cover [%]

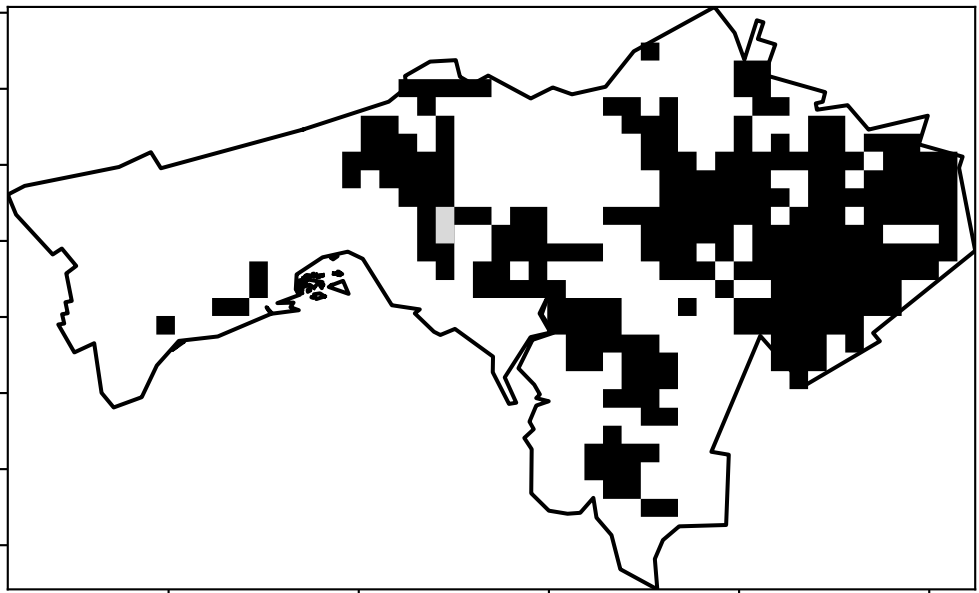


- 71%-100%
- 51%-70%
- 31%-50%
- 0-30%

Proportion of vegetation cover class in area

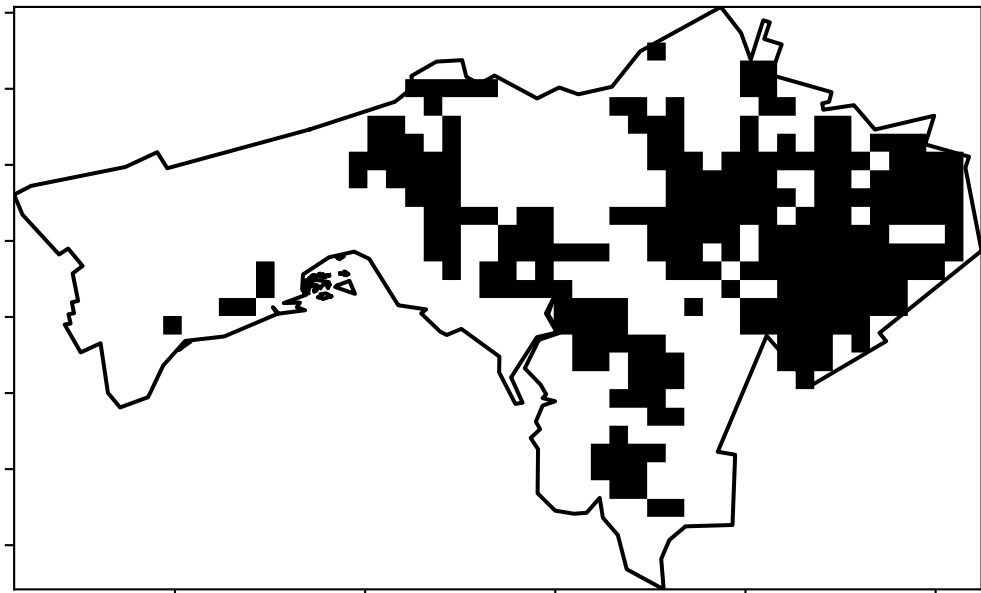


% Area protected from water erosion (>70%)



- Area not protected  
0.8% of  
region (51  
ha)
- Area  
protected  
99.2% of  
region  
(6,398 ha)

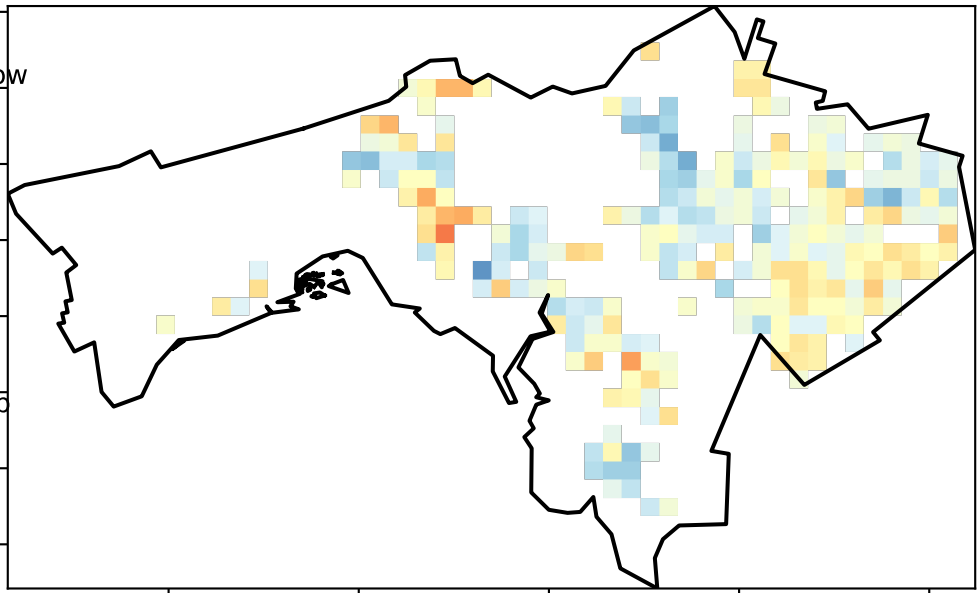
% Area protected from wind erosion (>50%)



- Area  
protected  
100.0% of  
region  
(6,450 ha)

Total Vegetation Cover Anomaly [%]

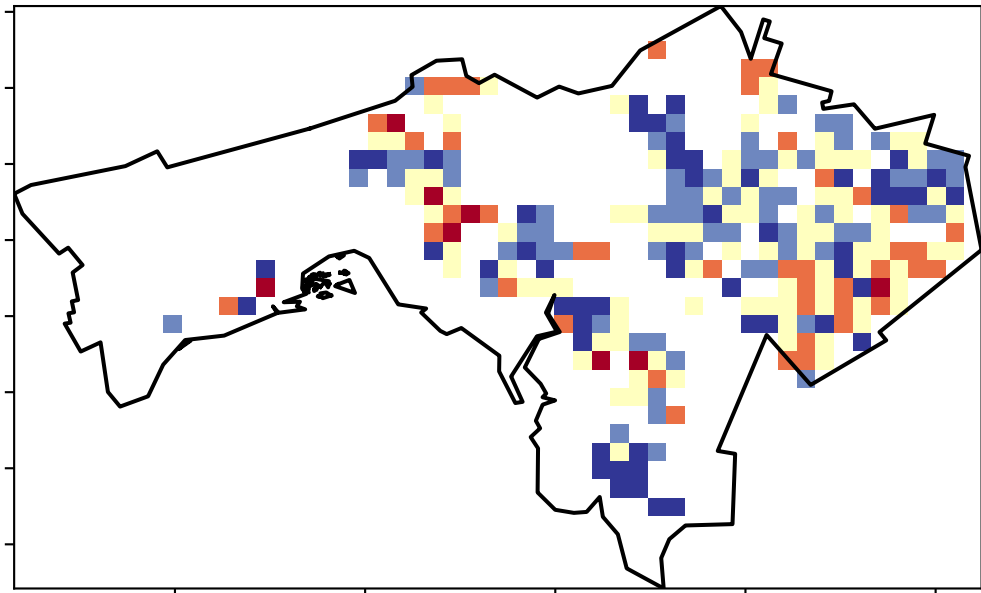
Anomaly show how  
many percentage  
points each  
pixel is from  
the mean. That  
is, red pixels  
are about 20%  
lower than the  
mean of that  
pixel. The mean  
is only for the  
month of the map  
using baseline  
from 2001 to  
2019.



- 20
- 10
- 0
- 10
- 20

Deciles show where the  
pixel value lies in the  
record, from highest to  
lowest, for that month.  
That is, red pixels are  
in the lowest 10% of  
records for that month of  
the map using baseline  
from 2001 to 2019.

Total Vegetation Cover Decile [%]



- 10
- 9
- 8
- 7
- 6
- 5
- 4
- 3
- 2
- 1



tern

Ecosystem Research Infrastructure



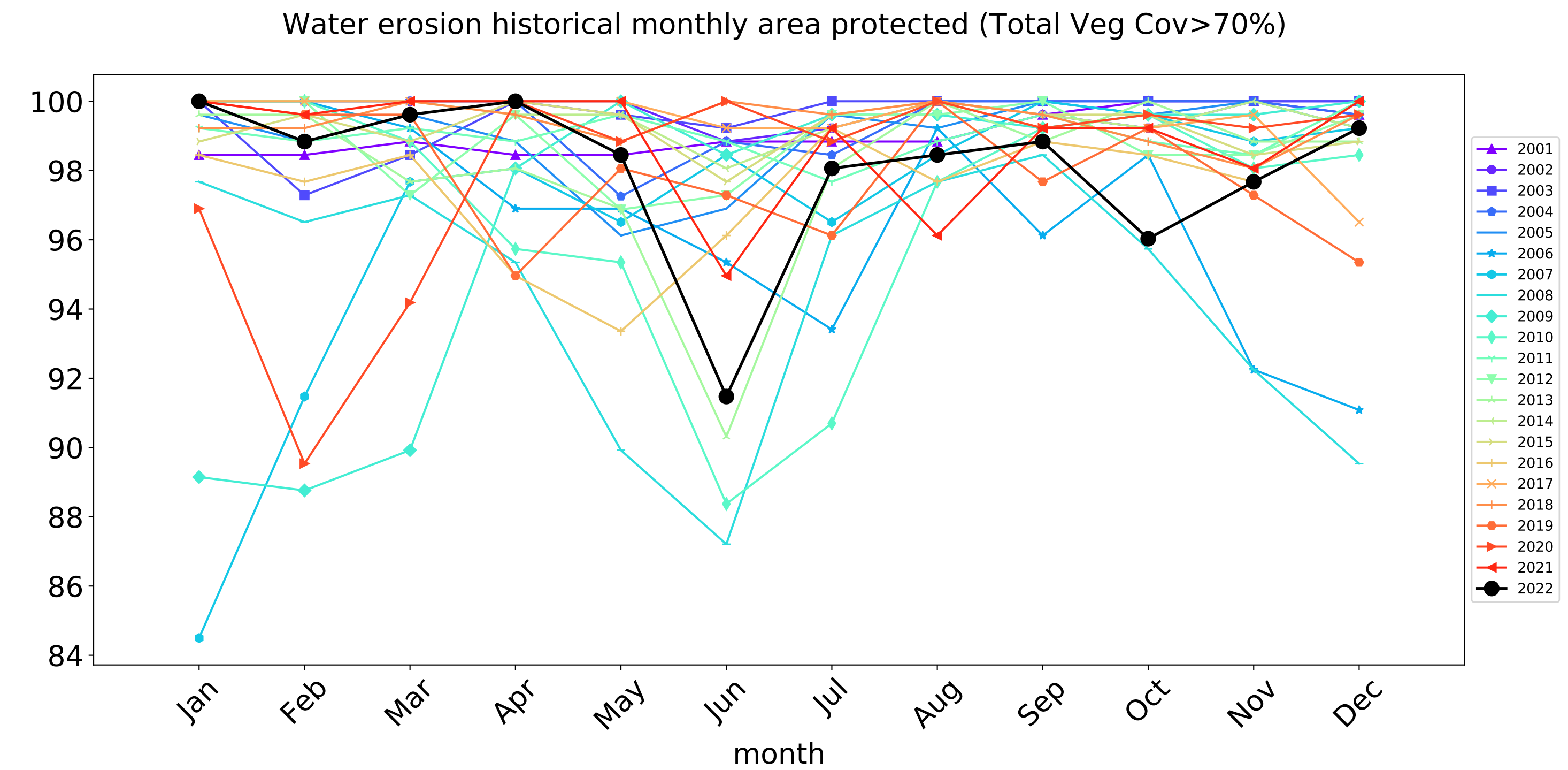
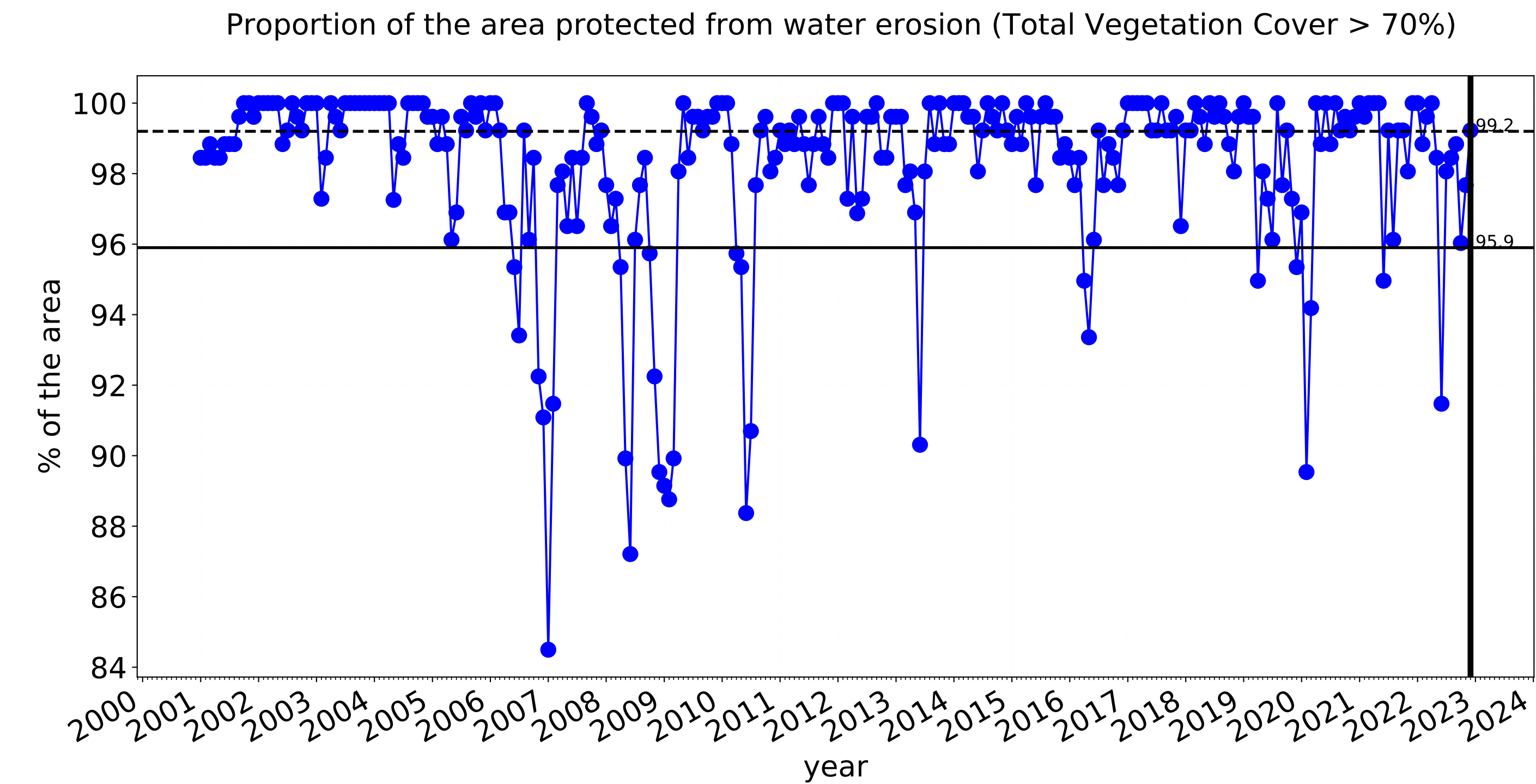
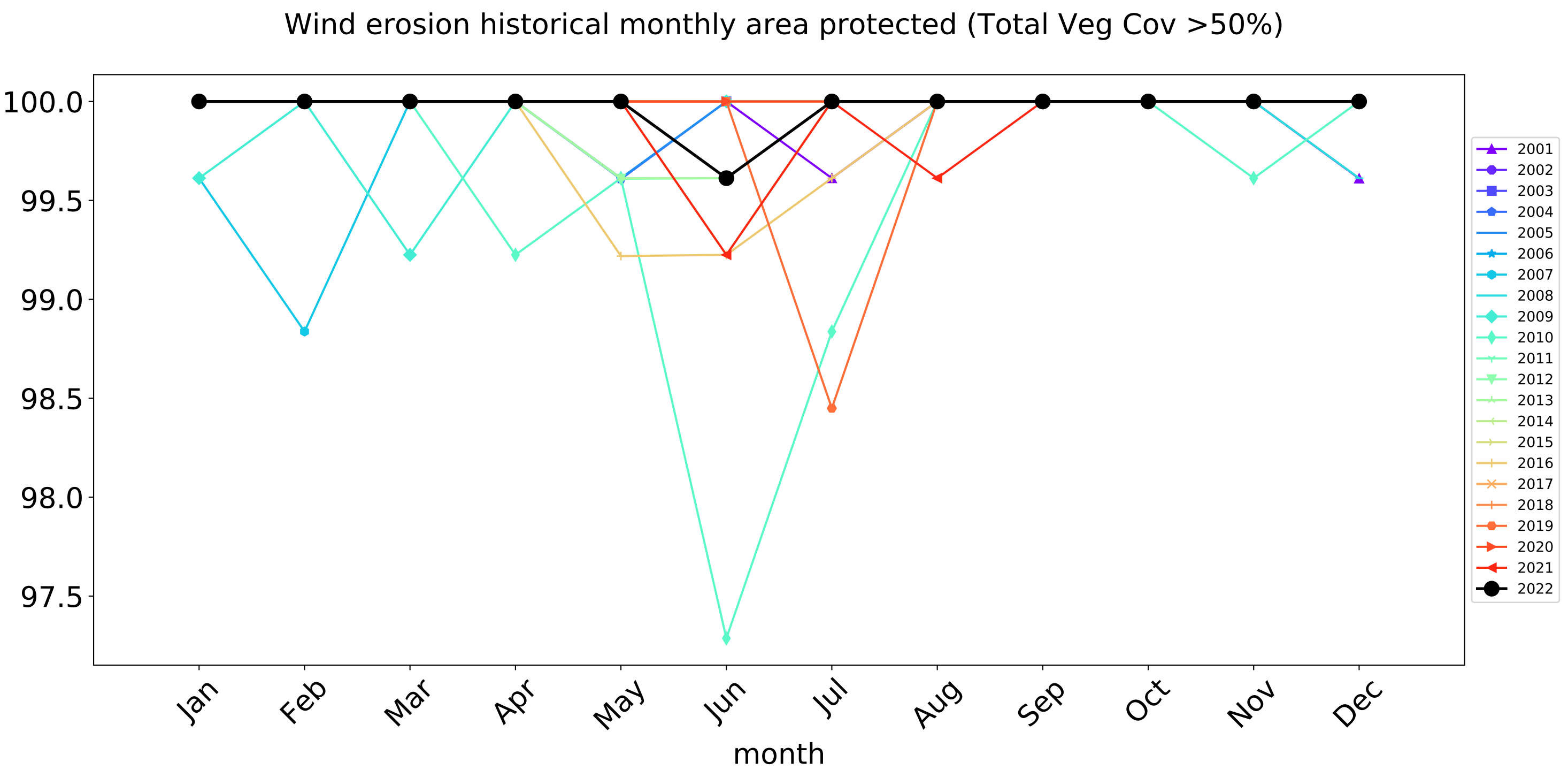
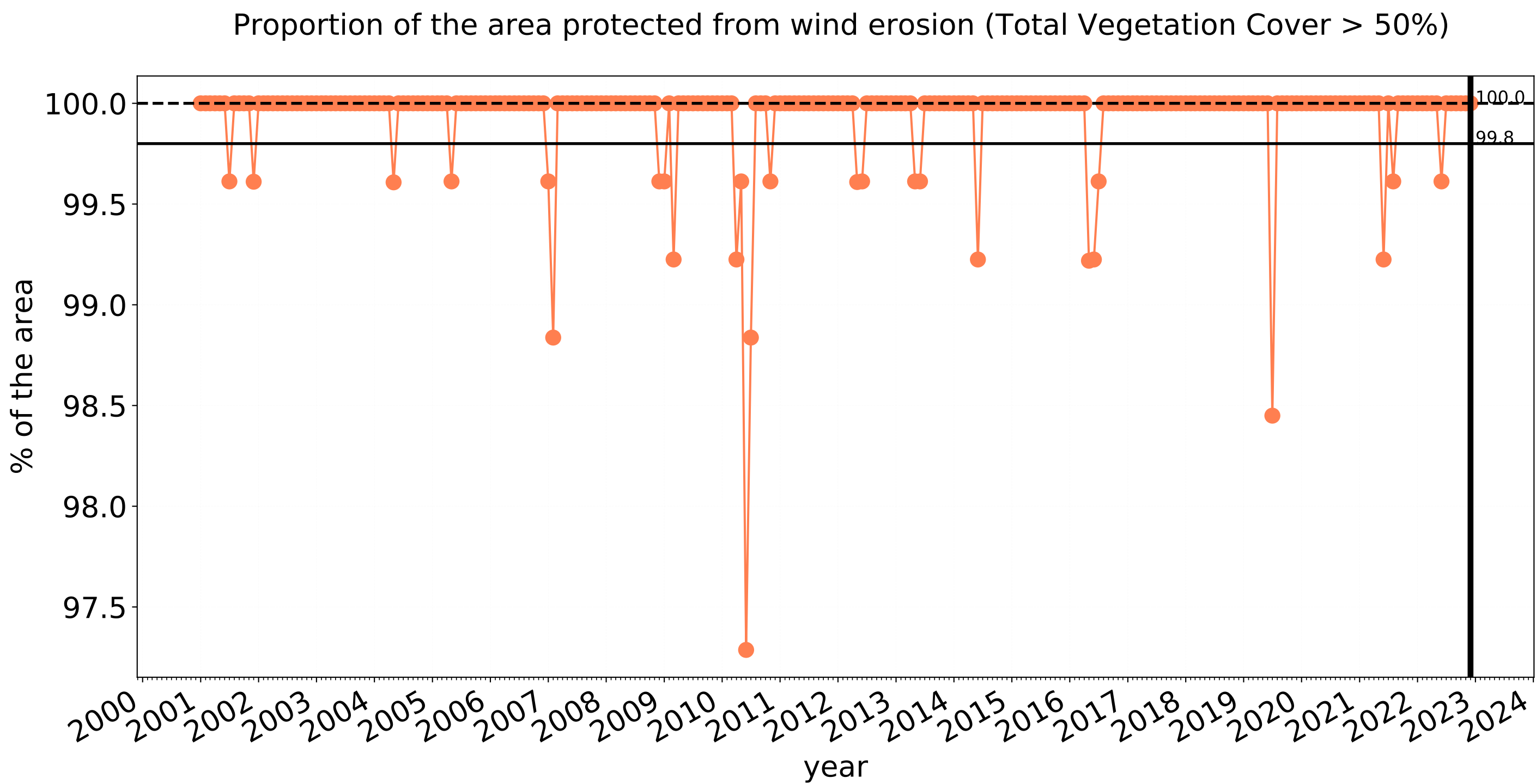
Australian Government

National  
Landcare  
Programme





Grazing timeseries



tern  
Ecosystem Research Infrastructure



National  
Landcare  
Programme





