

[LGA Winton_(S) (QLD)] - total vegetation cover soil protection report [Sep 2019]

This report provides information about vegetation covering the soil surface for a region during a single month with comparison to previous years. The total vegetation cover indicates where soil is likely to be protected from wind ($\geq 50\%$ total vegetation cover) and water/hillslope ($\geq 70\%$ total vegetation cover) erosion. Results are shown for the whole region (polygon) and also separated by land use and forest cover class. This is because different land use / forest cover classes are likely to have different cover patterns and targets.

[Winton_(S)]

The six maps and two graphs provide a report for the month with:

- Land use and forest cover information for the area:
 - o Map: Land use and forest cover
 - o Chart: Land use and forest cover area
- Total vegetation cover for this month:
 - o Map: total vegetation cover classified into 4 classes
 - o Chart: total vegetation cover percentage area classified into 4 classes
- Areas protected from erosion for the month:
 - o Map: water erosion protection ($>70\%$ cover) percentage area and hectares
 - o Map: wind erosion protection ($>50\%$ cover) percentage area and hectares
- Comparison with previous years:
 - o Map: anomaly – compare this month to the average cover from the same month in previous years
 - o Map: deciles – rank this month against the same month in previous years
- Time series from January 2001 to current:
 - o Wind erosion protection time series: percentage of the area of the region with greater than 50% cover for each month since January 2001 (orange line): Horizontal lines are 10th (cover target) and 50th percentiles. Vertical line is month of report.
 - o Water erosion protection time series: percentage of the area of the region with greater than 70% cover for each month since January 2001 (blue line): Horizontal lines are 10th (cover target) and 50th percentiles. Vertical line is month of report.
 - o Rainfall: millimetres rainfall each month (black line). Vertical line is month of report.
- Time series for each month stacked by year
 - o Same data as time series from January 2001 to current month, grouped by month. Black line is current year of data.
- Water erosion protection on higher slopes. As slope increases, more cover is required to control water erosion. The thresholds reported are:
 - o the percentage area with pixels greater than 80% total cover
 - o the percentage area with pixels greater than 90% total cover
 - o the percentage area with pixels greater than 95% total cover

The following pages repeat the above sequence for each land use and forest cover class. For example

- All agricultural lands, that is grazing, cropping plus Horticulture (depending on what land use is present)
- Grazing lands by forest classes if present
- Cropping lands
- Irrigation lands
- Protected areas by forest classes if present

The following pages repeat the above sequence for each land use and forest cover class if 1% or more of area makes up a land use and forest cover class. Four land uses are reported: Conservation and natural environments, Agriculture, production native forests and plantation forests, and other. Agriculture is further divided into grazing, crops and horticulture are then divided into non-irrigated and irrigated. Land use is further divided by forest class if present: non-forest, woodland forest and non-woodland forest.

Explanatory notes:

This report has been generated using MODIS fractional vegetation cover information available in Rangelands and Pasture Productivity (RAPP) map tool. The report is based on an analysis of 500 metre pixel data on monthly time steps. Report uses baseline from January 2001 to September 2019 for each month to generate anomalies and deciles. Post September 2019 all similar months are used to calculate anomalies and deciles.

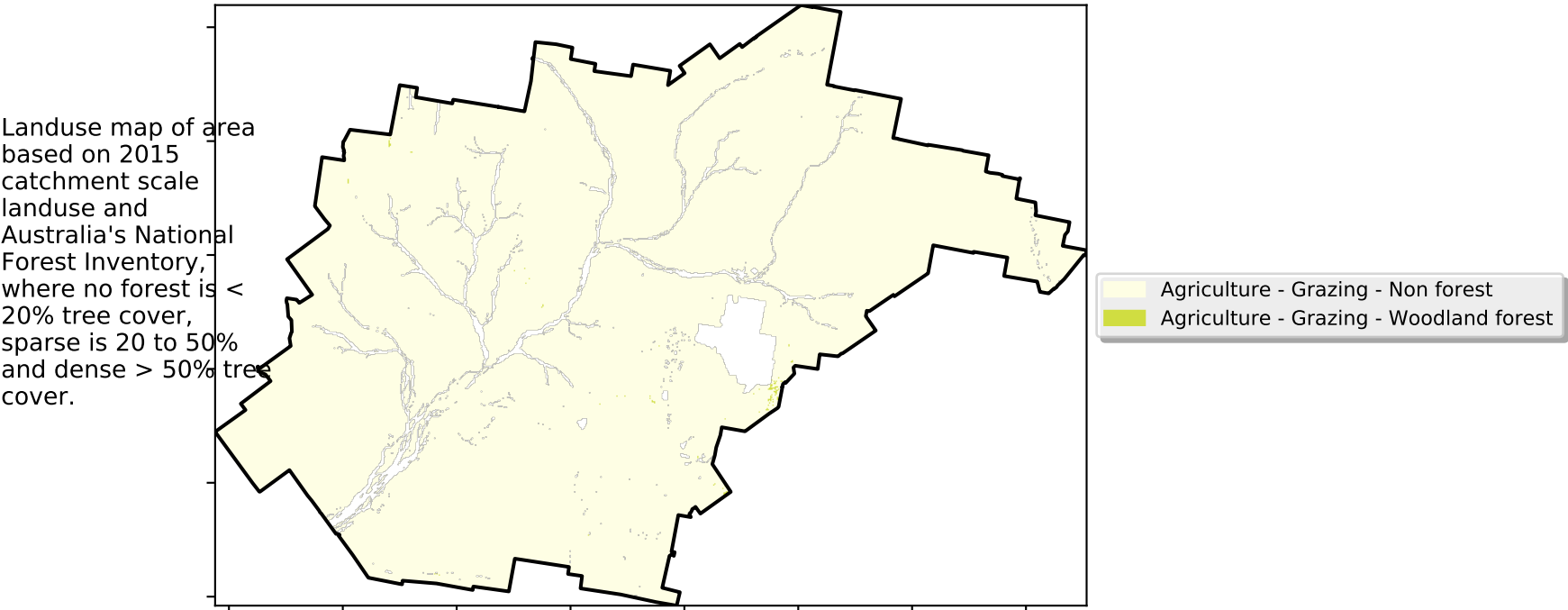
Acknowledgment of data:

1. <http://www.agriculture.gov.au/abares/aclump/land-use/alum-classification>
2. <http://www.agriculture.gov.au/abares/forestsaustralia/sofr/sofr-2018>
3. <https://www.dpi.nsw.gov.au/agriculture/pastures-and-rangelands/establishment-mgmt/production-management2/groundcover>
4. MODIS Fractional cover algorithm:
<https://doi.org/10.4225/08/5848a3f19a7b3>

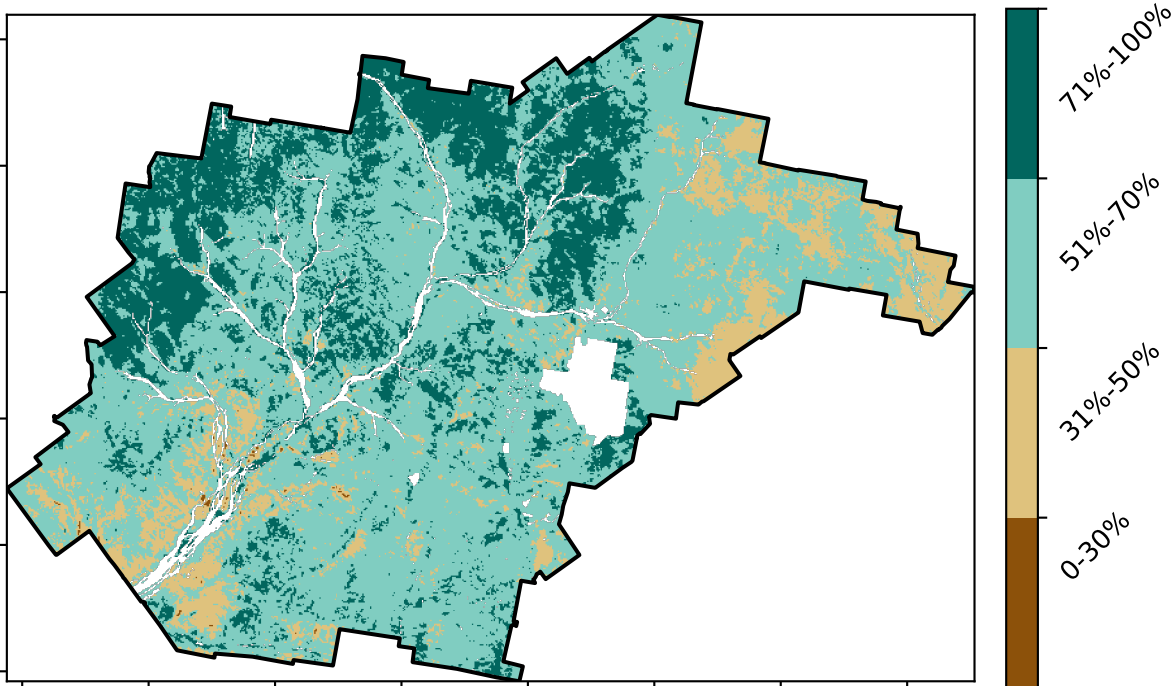


Grazing

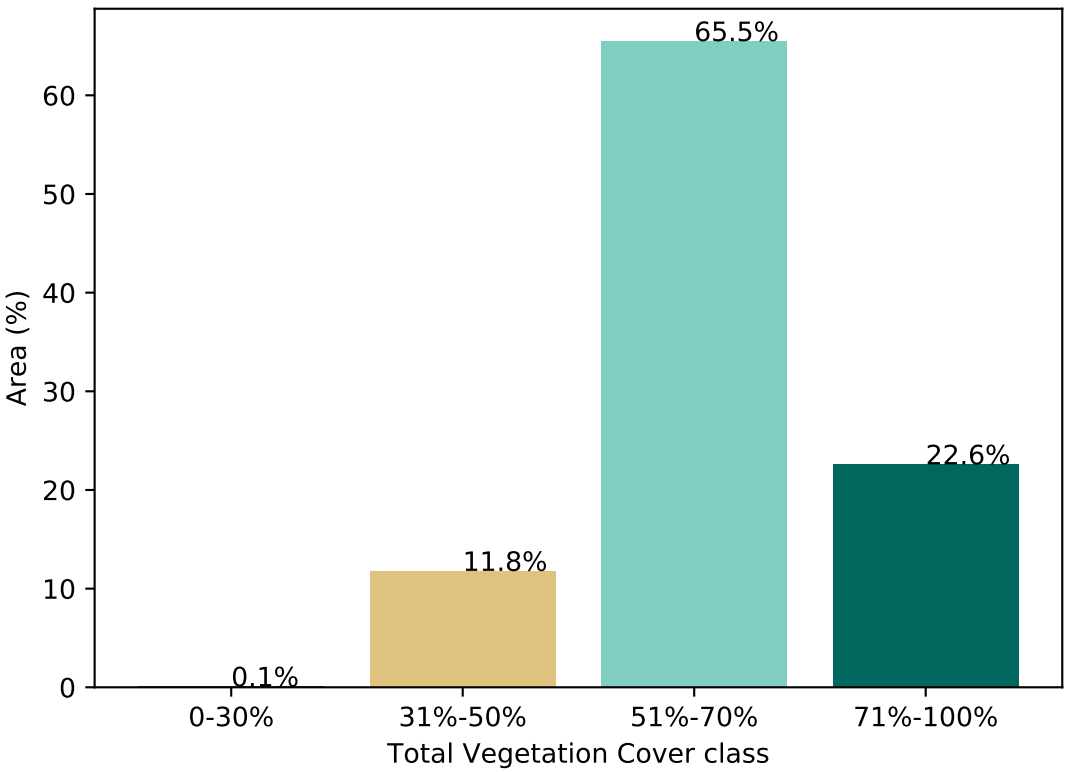
Land use and forest cover



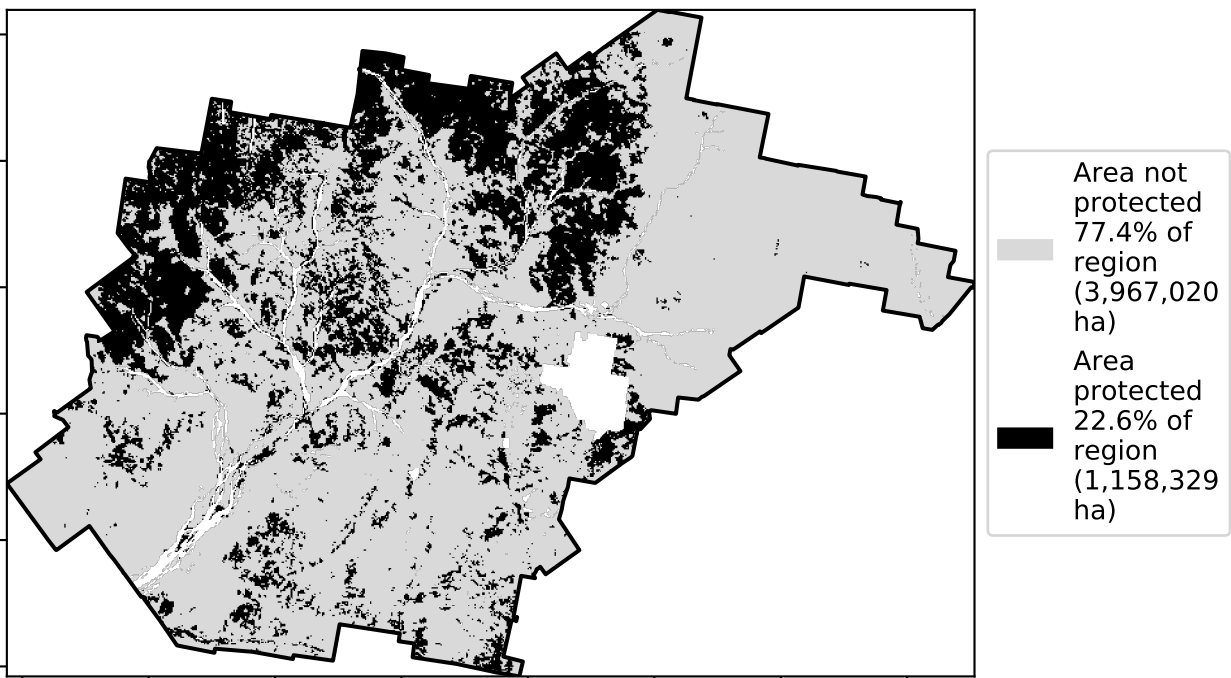
Total Vegetation Cover [%]



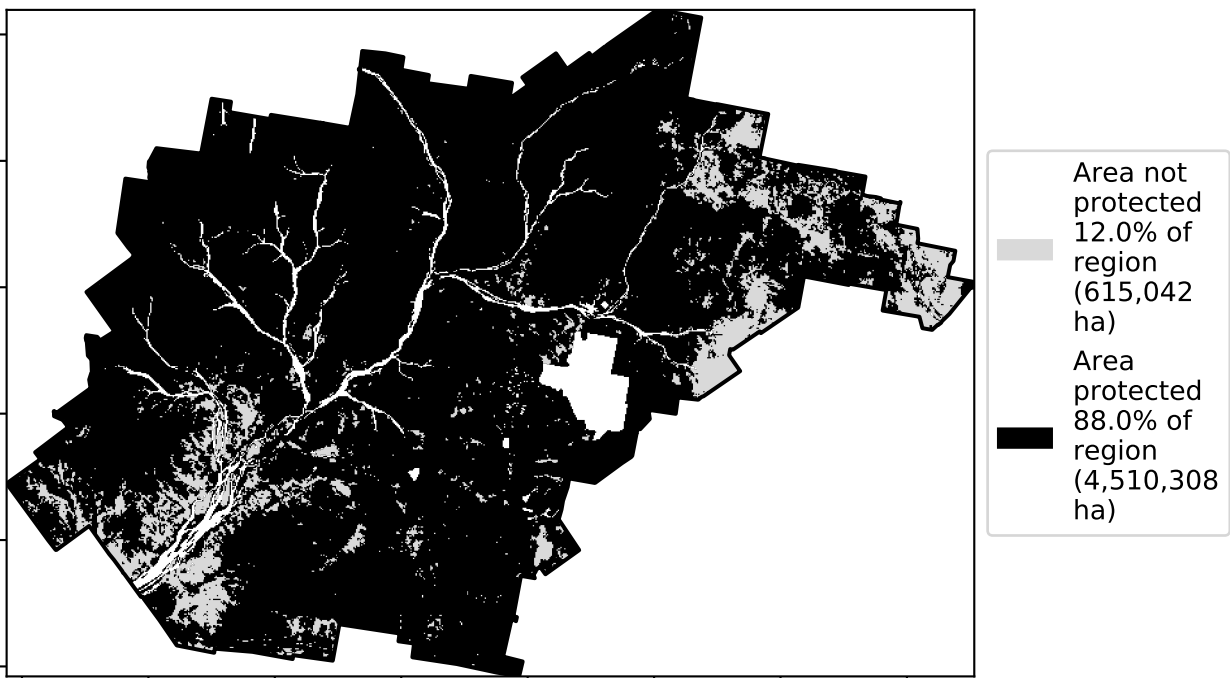
Proportion of vegetation cover class in area



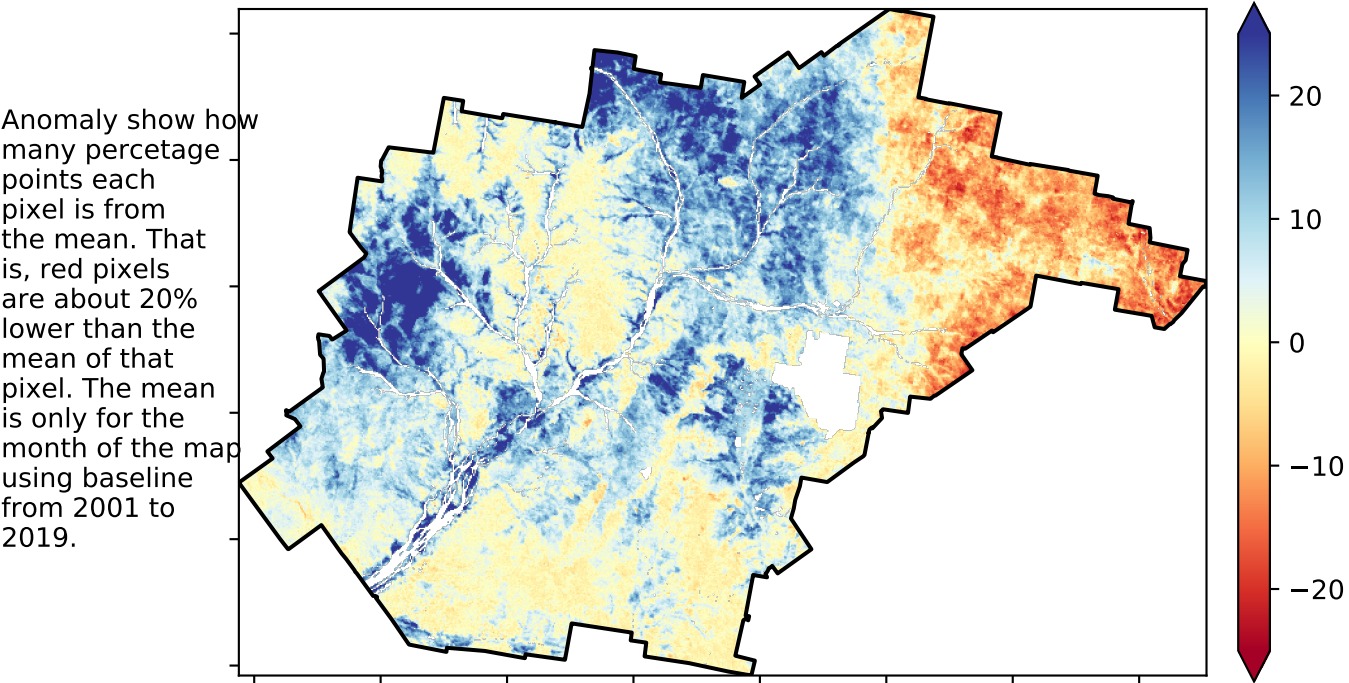
% Area protected from water erosion (>70%)



% Area protected from wind erosion (>50%)

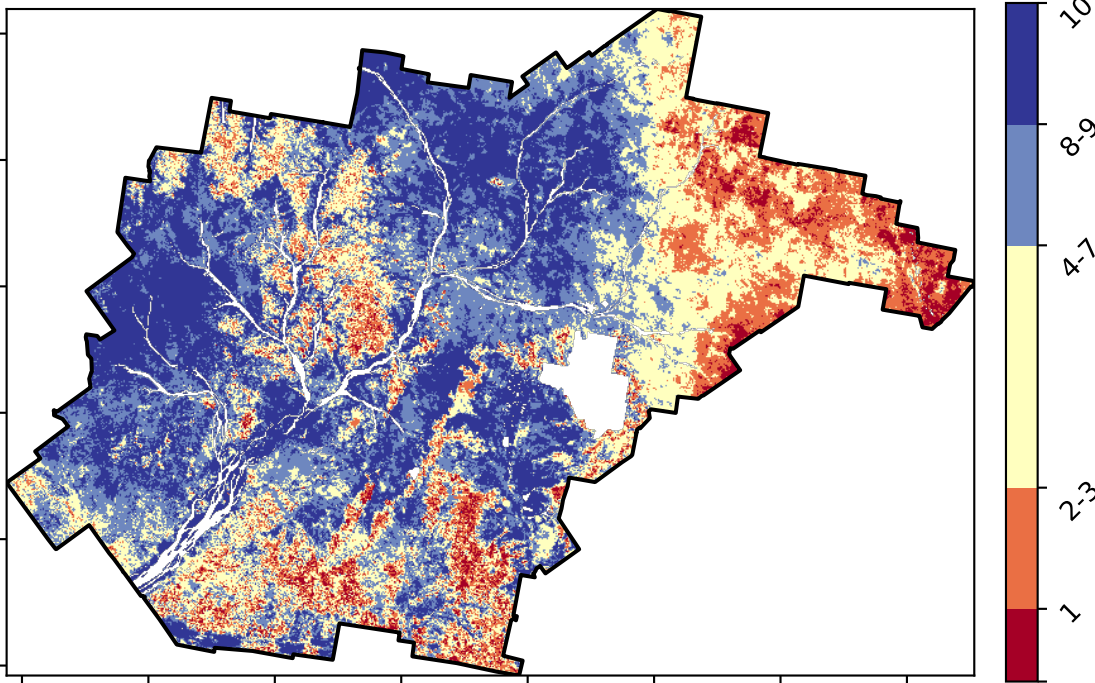


Total Vegetation Cover Anomaly [%]



Total Vegetation Cover Decile [%]

Deciles show where the pixel value lies in the record, from highest to lowest, for that month. That is, red pixels are in the lowest 10% of records for that month of the map using baseline from 2001 to 2019.



TERN



National
Landcare
Programme



Planning,
Industry &
Environment

Grazing timeseries

